



Cobra

Hypertherm®
True Hole Capable Machine

Flexible and Cost Effective Plasma & Flame Cutting

Cobra machines are flexible in design and can be specified in a wide range of sizes from 3x1.5m to 12x3m. These flexible rail-based machines are available with virtually the full range of Hypertherm plasma cutting systems and oxy-fuel flame cutting. Hypertherm HyPerformance plasma delivers the latest True Hole capability when integrated with an Esprit Cobra machine. The machine features dual side direct rack and pinion drive in the X axis and twin linear bearings and direct rack & pinion drive in the Y axis delivering smooth, precise contouring for optimum cut quality. The EDGE Pro CNC coupled digitally to AC brushless drives with fibre optics offers high precision and ultimate reliability.



Esprit Automation Ltd
Placketts Mill, Church Drive
Sandiacre, Nottingham
NG10 5EE, United Kingdom

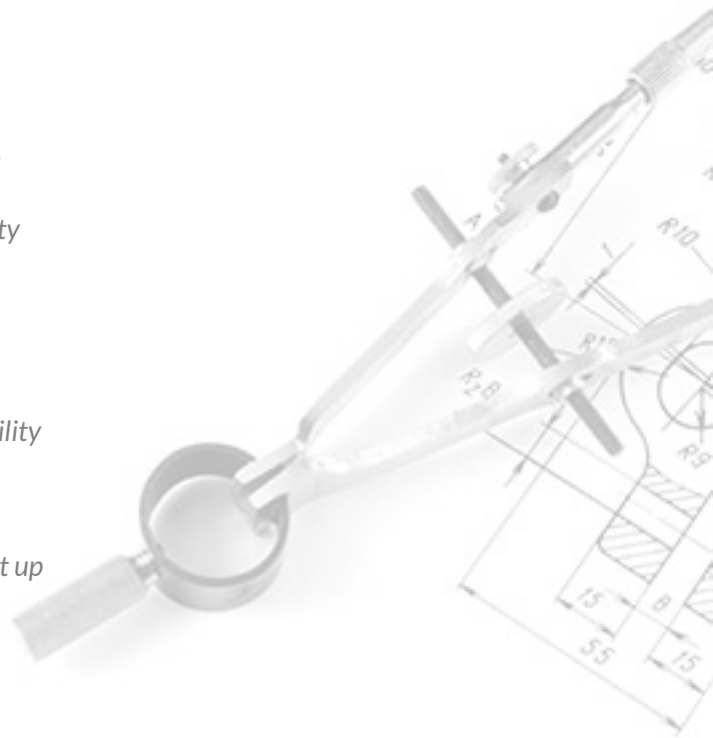
Tel: +44 (0) 115 939 1888
Email: info@espritautomation.com





Design Features

- ✔ Cost effective precision cutting ...*Ideal for the general fabricator*
- ✔ Multiple plasma & flame cutting torches ...*Maximum productivity*
- ✔ Range of standard sizes ...*Flexible*
- ✔ Powerful AC brushless drives ...*High dynamic performance*
- ✔ Direct drive rack & pinion transmissions ...*Accuracy & repeatability*
- ✔ Ball screw digital torch height control ...*Best cut quality*
- ✔ Laser pen pointer for plate positioning and alignment ...*Easy set up*
- ✔ Torch collision protection ...*Longer torch life*
- ✔ Hypertherm True Hole capable ...*The best plasma cut holes*



Cobra Applications

- ✔ Machinery manufacture
- ✔ Structural steel
- ✔ Oil & Offshore industry
- ✔ Trailer manufacture
- ✔ Lifting equipment
- ✔ Factory & site maintenance
- ✔ Staircase manufacture
- ✔ Food processing equipment
- ✔ Agricultural machinery

Engineered For Productivity & Flexibility

EDGE Pro CNC

The EDGE Pro CNC incorporates all the latest technology for optimised machine performance and ease of use. The Ethernet digital on-machine network ensures the very best contouring performance for accurate parts. The intuitive user interface via the 15" colour touch screen and on-screen wizards allow even inexperienced operators to achieve great results. Closely integrated with the HPR XD plasma systems, the EDGE Pro exploits plasma's full potential.

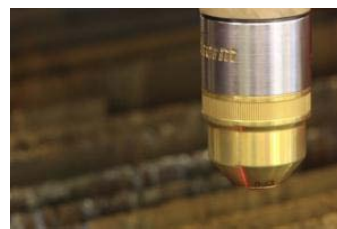


HyPerformance HPR XD Plasma

HyPerformance Plasma cuts fine feature parts with superior quality and consistency, virtually eliminating the cost of secondary operations. Available in four sizes, the HPR XD plasma cutting systems cover all applications. Cutting mild steel, stainless steel and aluminium from gauge to 50mm and beyond, the HPR XD units produce high quality, consistent results over the life of the consumables. HyPerformance plasma delivers unprecedented cutting speed & quality.



Cobra machines are flexible and can be specified in a wide range of sizes from 3 x 1.5 m to 12 x 3 m. These flexible rail-based machines are available with virtually the full range of Hypertherm plasma cutting systems and oxy-fuel flame cutting.



The Cobra is designed to exploit plasma & flame cutting technology. Both cutting processes can be specified for full cutting flexibility from gauge to 300mm.

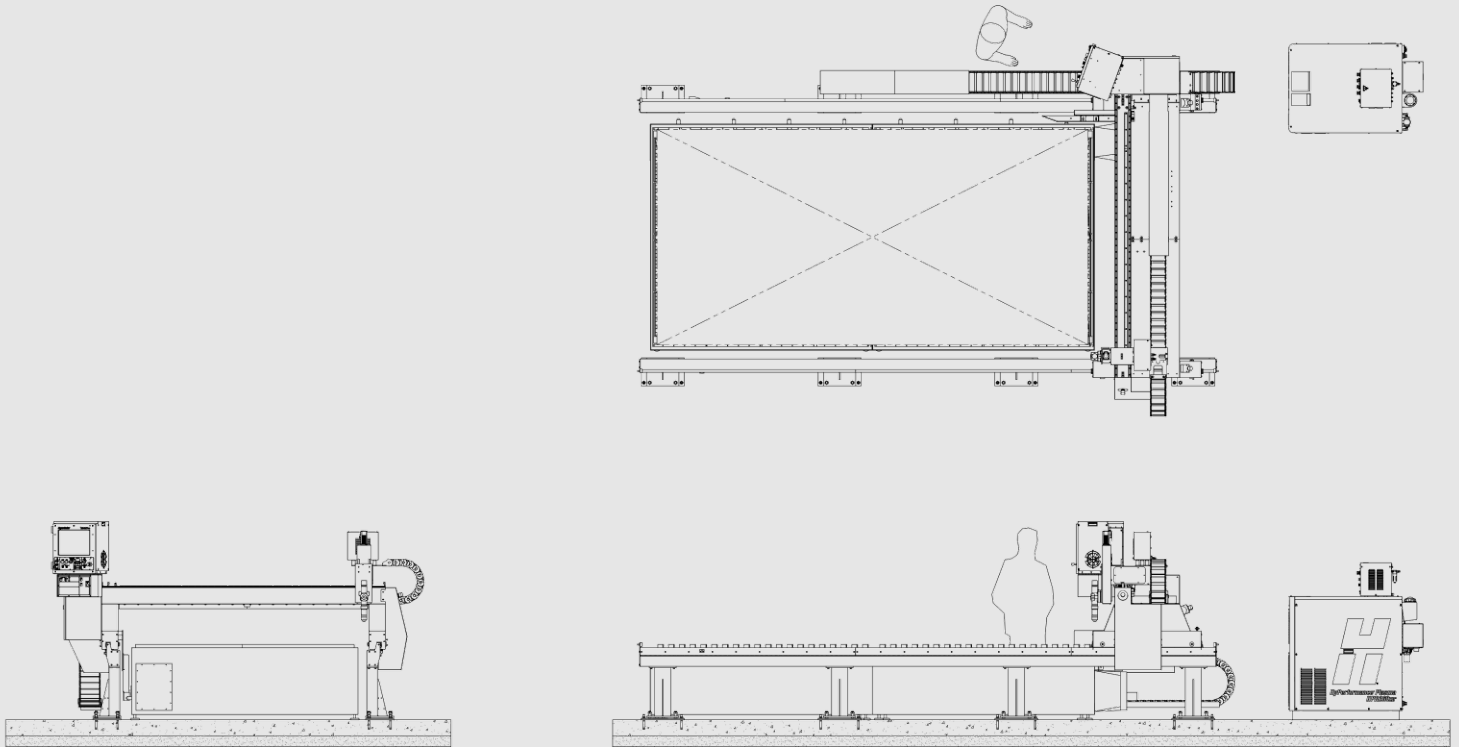
Cobra machines are designed using the latest 3D solid modelling techniques to facilitate precise manufacture in our Nottingham factory.

Laser spot identification to locate plate edges simplifies machine setup. One of the many time saving features incorporated into the Cobra machine range.

Plate marking for part numbers, bending lines or marking out for assembly is available on the Cobra; Arc marking or Pin-matrix marking are available.

Cobra Machine Options

- ✓ HPR130XD - 16 mm dross free mild steel cutting
- ✓ HPR260XD - 32 mm dross free mild steel cutting
- ✓ HPR400XD - 38 mm dross free mild steel cutting
- ✓ Full Range of Hypertherm plasma systems
- ✓ Oxy-Fuel flame cutting - 300 mm
- ✓ Bed sizes 3 x 1.5 m to 12 x 3 m
- ✓ Up to 6 cutting torches
- ✓ Fume extraction cutting table
- ✓ High speed pin matrix marking
- ✓ Procut CAD/CAM software



DESIGN SPECIFICATIONS

Nominal Cut Width	As per machine denomination (e.g. Cobra 1500 = 1,500 mm)
Nominal Cut Length	Variable in 1,000 mm increments
Rail Length	Nominal Cut Length + 1,339 mm
Overall Width	Nominal Cut Width + 1,351 mm
Overall Length	Nominal Cut Length + 1,576 mm
Overall Height	1,841 mm
Maximum Traversing Speed	20 m/min

POWER REQUIREMENTS

Input Voltage (U_1)	230 V / 1 Ph / 50 Hz / Earth / Neutral
Input Current (I_1)	3 - 5 A
Input Power ($U_1 \times I_1 \times \sqrt{3}$)	0.7 - 1.2 kVA
Recommended Fuse Size	16 A
Recommended Cable Size	2.5 mm ² 3 core SY Control Flexible Cable



Esprit Automation Ltd
 Placketts Mill, Church Drive
 Sandiacre, Nottingham
 NG10 5EE, United Kingdom

Tel: +44 (0) 115 939 1888
 Email: info@espritautomation.com

